

**T**HINGS NEEDFUL &  
EXPEDIENT FOR  
THE CEREMONIES  
OF THE CHURCH.



## **H**ENCEFORTH

be kindled by a more  
splendid genius, and  
begin with the full  
exertion of thy mind—  
those things which are  
still wanting among the  
utensils of the House of  
the Lord.-----ooo-----

These are the chalices,  
candelabra, incense-burners  
vials, pitchers, caskets of  
sacred relics, crosses, missals,  
and other things which are  
required as needful and  
expedient for the ceremonies  
of the Church. sss-----sss

Theophilus the Monk. 12<sup>th</sup> century.

c.1936



STATUE—MADONNA AND CHILD. WINTHORPE, ALL SAINTS.

*Carved limewood, decorated.*

DESIGNED BY IAN HOWGATE.





REREDOS.                      BRADFORD, ST. JOHN, TONG STREET.  
*Executed in walnut, with sculpture in bas-relief, decorated.*

ARCHITECT: WILLIAM WHEELER, A.R.C.A.





*HANGING ROOD.*

*HARROW, ST. PETER.*

*A treatment of Raised Gesso and Wax Painting.*

ARCHITECT: A. L. N. RUSSELL, F.R.I.B.A.

ARTIST: W. LAWSON.





*CALVARY.*

*LEEDS, ALL SOULS.*

*Portland Stone and Bronze.*

ARCHITECT: A. E. HENDERSON, F.S.A., F.R.I.B.A.





ST. WERBURGH. FOR THE LORD BISHOP OF BRADFORD.

*Carved and decorated pearwood.*

DESIGNED BY W. WHEELER, A.R.C.A.





STAINED GLASS.

WELWYN, ST. MARY.

*Memorial Window to the actor, Edward Comyn Scott-Gatty, Esquire.*

ARTIST: WILLIAM LAWSON, FELLOW OF THE BRITISH SOCIETY OF  
MASTER GLASS PAINTERS.





*SCULPTURE FROM THE SOUTH DOOR. CROYDON, ST. MICHAEL.*

*Bronze.*

SCULPTOR: C. W. JEWITT.





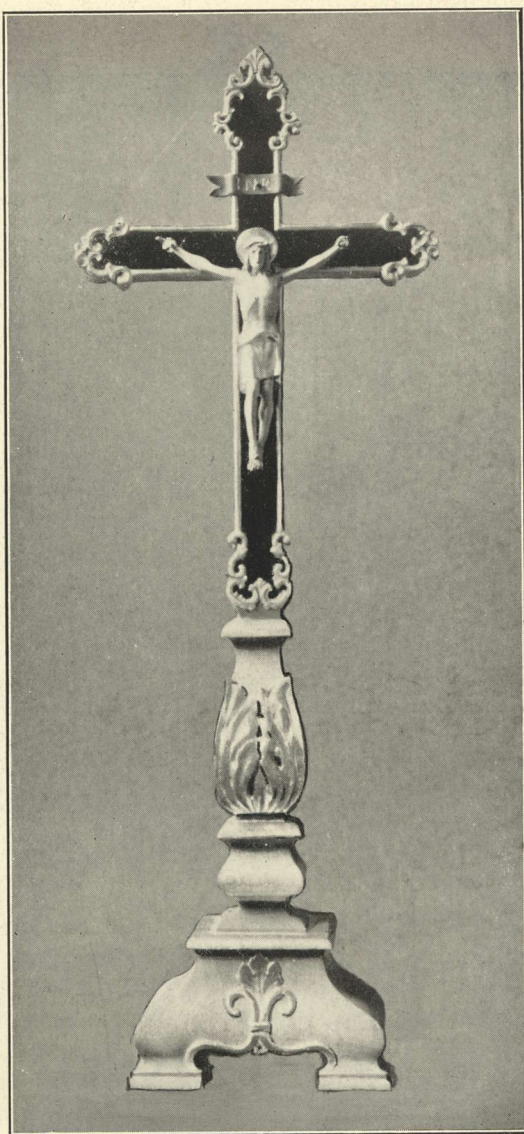
*THE LADY CHAPEL.*

*ARKESDEN, ST. MART.*

*Showing a simple setting with oak panelling in a mediæval Church.*

ARCHITECT: CYRIL E. POWER, A.R.I.B.A., F.R.HIST.S.  
GLASS BY W. LAWSON.





*ALTAR CROSS.*

*HOLBORN, ST. SEPULCHRE.*

*Carved wood, decorated.*

ARCHITECT: SIR CHARLES NICHOLSON, BT., F.R.I.B.A.





STANDARD CANDLESTICKS.

*Untouched oak with Silver Sconces.*

INVERNESS CATHEDRAL.

ARCHITECT: W. WHEELER, A.R.C.A.





ANGEL FOR RIDDEL POST.  
CHRIST CHURCH, MELBOURNE, AUSTRALIA.

*Carved wood, gilded.*

DESIGNED BY IAN HOWGATE.



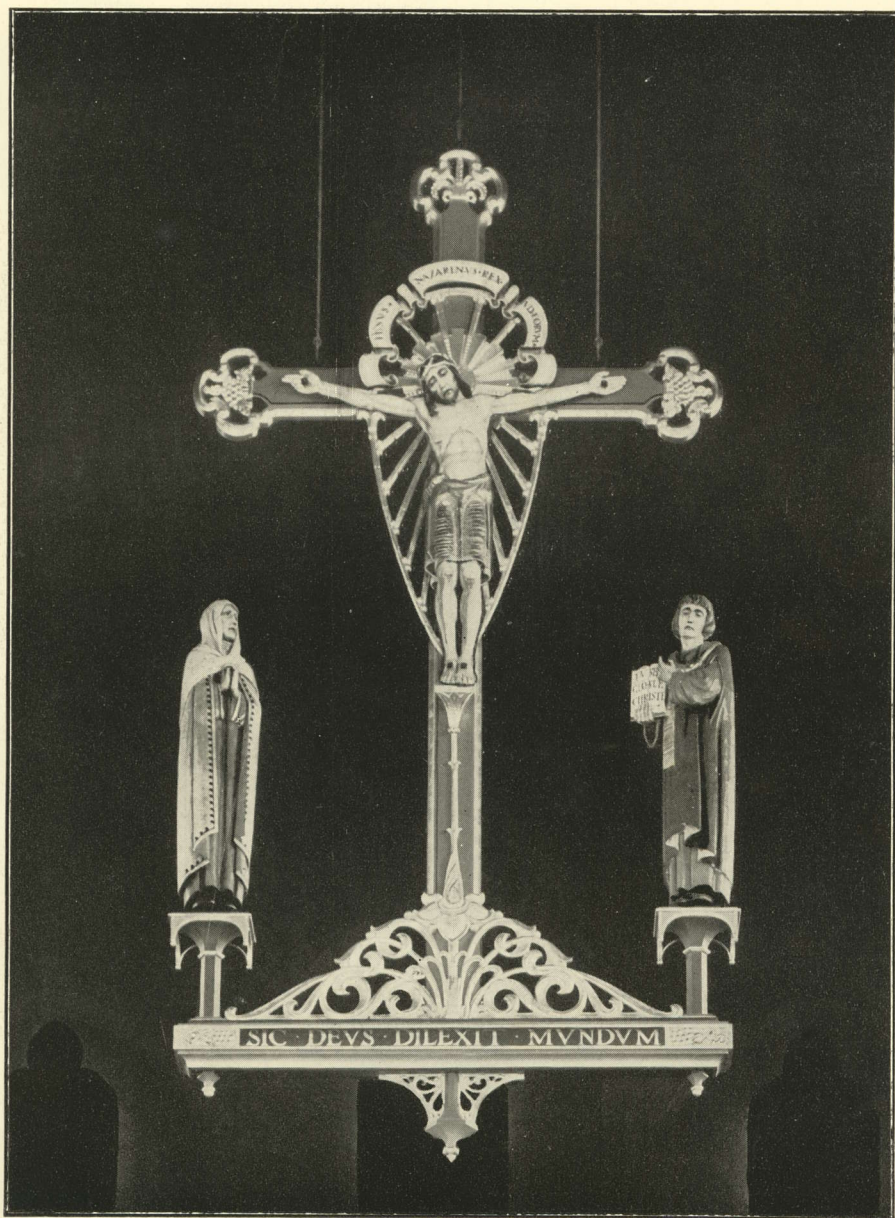
ROOD BEAM AND FIGURES.

EAST PRESTON, ST. MARY.

*English oak beam and cross, with figures and ornament in colour.*

ARCHITECT: CYRIL E. POWER, A.R.I.B.A., F.R.HIST.S.





*HANGING ROOD.*

*STROUD GREEN, HOLY TRINITY.*

*Executed in wood, and decorated in a scheme of silver, green and gold.*

ARCHITECT: WILLIAM LAWSON.

*PASTORAL STAFF*

*MADE FOR THE LORD BISHOP OF LLANDAFF.*

*Silver and ebony.*



*PECTORAL CROSS*

*FOR THE LORD BISHOP OF ST. DAVIDS.*

*Gold enriched with a sapphire and seven small rubies.*

DESIGNED BY WILLIAM LAWSON AND MADE BY  
A. J. WILKINS.





TABLET.

ANTIGUA CATHEDRAL, B. W. INDIES.

*Bronze, with roundel of St. George, in champleve enamel.*

DESIGNED BY WILLIAM WHEELER, A.R.C.A.



PORTION OF EMBROIDERED DOSSAL.

MANSFIELD WOODHOUSE CHURCH.

*Appliqué of various colours on a field of gold silk.*

ARCHITECTS: MESSRS. HEAZELL & SONS.



FESTIVAL COPE.

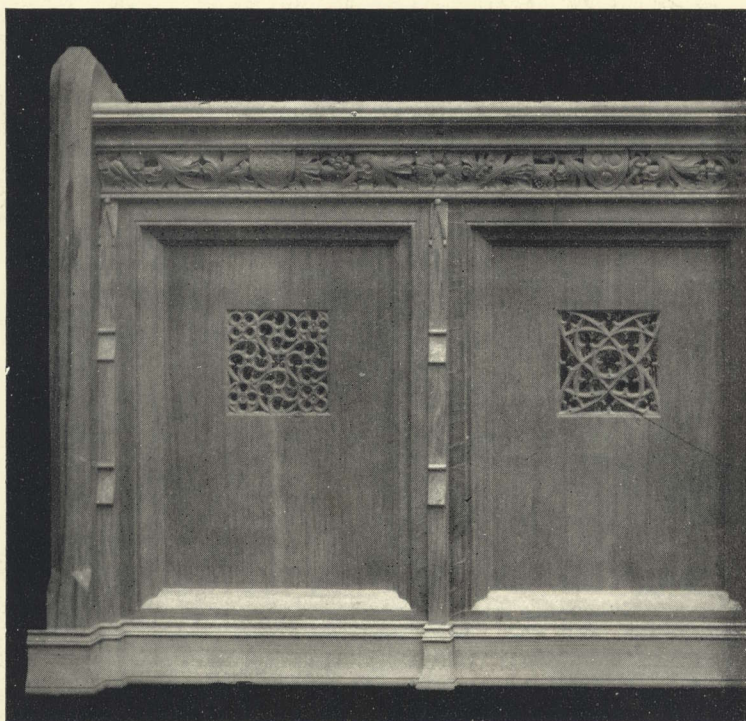
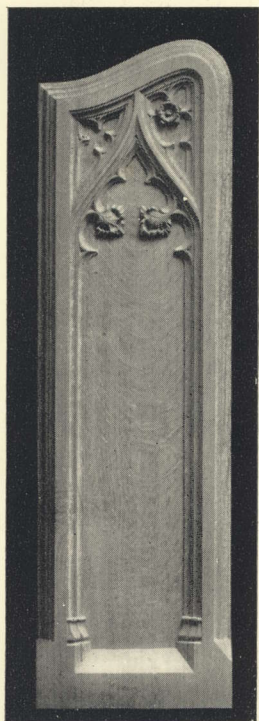
ST. CHAD'S COLLEGE, DURHAM.

*Appliqué Embroidery.*

DESIGNED BY W. LAWSON.

EMBROIDERED BY MISS E. R. BILLING.





DETAIL OF CHOIR STALLS. CHESTER, ST. PAUL'S, HOOLE.

*Austrian oak, fumed and waxed.*

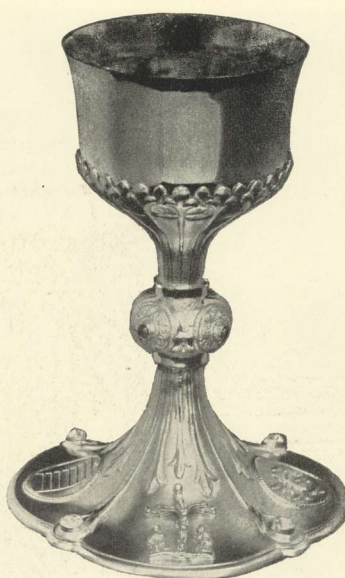
ARCHITECT: P. H. LAWSON, F.S.A., F.R.I.B.A.



*BANNER PAINTED ON SILK. BRAILES, ST. GEORGE.*

ARTIST: W. LAWSON.





CHALICE.

WESTMINSTER ABBEY.

*Beaten silver, enriched with jewels.*

DESIGNED BY A. E. HENDERSON, F.S.A., F.R.I.B.A.

CRAFTSMAN: J. STOCKER.



CENSER AND BOAT. NEWCASTLE-ON-TYNE, ST. JOHN.

*Beaten silver.*

CRAFTSMAN: C. A. HIRST.



*THE PULPIT.*

*EAST PRESTON, ST. MARY.*

*Austrian oak. The pierced panels are based on English Wild Flowers.*

ARCHITECT: W. WHEELER, A.R.C.A.





ALTAR ORNAMENTS.

*Carved wood, kupronised.*

FOLKESTONE, ST. PETER.

DESIGNED BY W. LAWSON.



PANELS IN BAS-RELIEF.

CHRIST CHURCH, HENDON.

*Carved wood, decorated in colour and gold. W. LAWSON AND H. PHILLIPS.*



*FIGURE FOR MORTUARY CHAPEL. PERTH CATHEDRAL.*

*Oak, with burnished gold Nimbus.*

*5 feet 6 inches high.*

ARCHITECT: A. L. N. RUSSELL, F.R.I.B.A.

SCULPTOR: H. R. PHILLIPS.

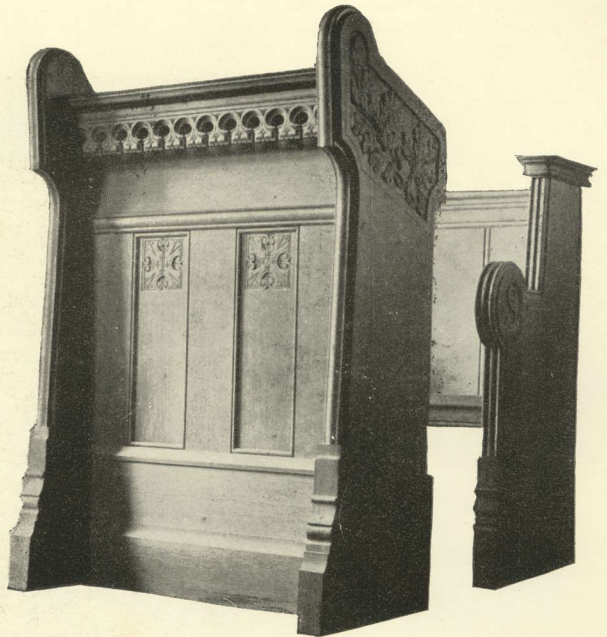


*PRIEST'S STALL,  
DEVONPORT, ST. STEPHEN.*

*Fumed oak.*

ARCHITECT:

CYRIL E. POWER, A.R.I.B.A., F.R.HIST.S.



*STATION OF THE  
CROSS.*

*CROYDON,  
ST. MICHAEL.*

*Wood carved and  
decorated.*

DESIGNED BY W. LAWSON.





MOTHERS' UNION BANNER. GATESHEAD, ST. CHAD.  
*Appliqué embroidery on silk damask. WORKED BY MISS V. C. ANDREWES.*





*ALTAR SETTING. DOCKLAND SETTLEMENT CHAPEL, CANNING TOWN, E.*

*An arrangement on traditional lines.*

ARCHITECT: WILLIAM WHEELER, A.R.C.A.



STAINED GLASS. ST. JOHN'S CHURCH, PINETOWN, NATAL.

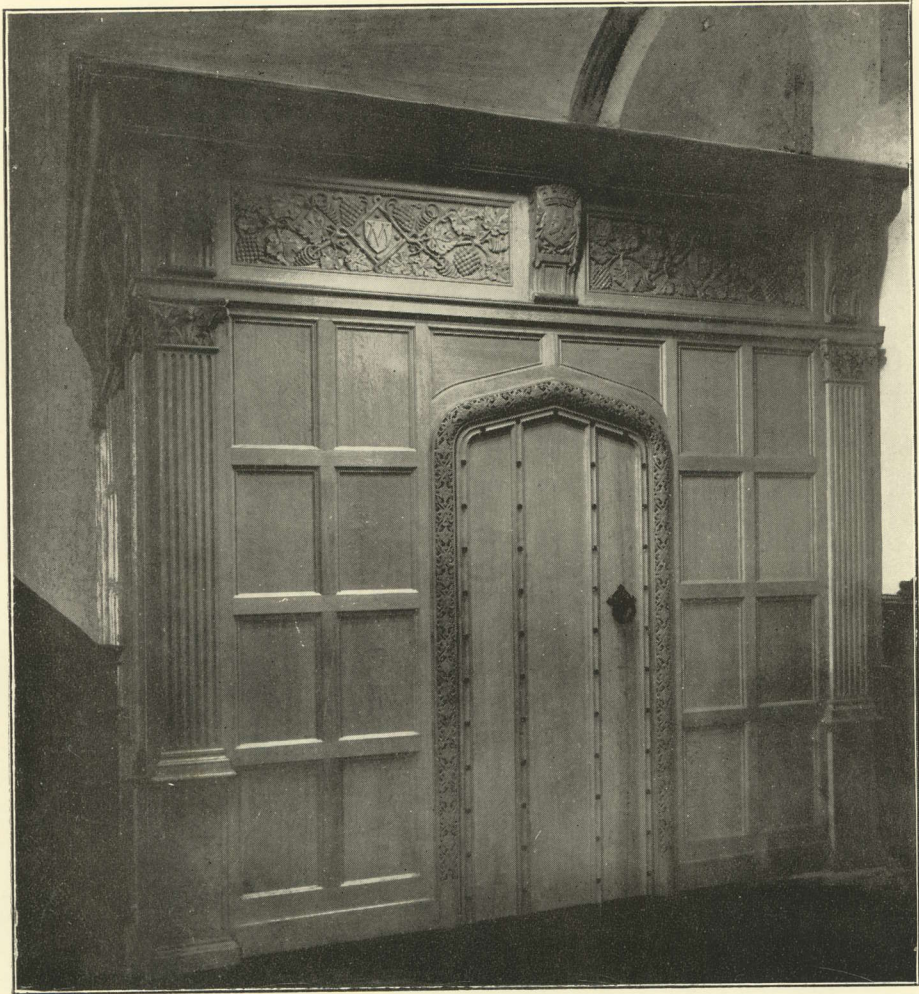
ARTIST: W. LAWSON.





*HAND BEATEN SILVER CHALICE. PRESTON, ST. PAUL.*

CRAFTSMAN: A. J. WILKINS.



*CHOIR VESTRY.*

*POPLAR, ST. MATTHIAS.*

*A treatment in Austrian wainscot oak, untouched.*

ARCHITECT: W. WHEELER, A.R.C.A.



ALL THE WORK SHOWN IN THIS BOOKLET  
HAS BEEN EXECUTED UNDER THE SUPER-  
VISION OF THE ARTISTS AND ARCHI-  
TECTS CONCERNED, BY THE  
FAITH CRAFT-WORKS, LTD.  
7 TUFTON STREET,  
WESTMINSTER  
LONDON  
S.W. 1

PRINTED IN GREAT BRITAIN  
BY THE FAITH PRESS, LTD.,  
LEIGHTON BUZZARD