

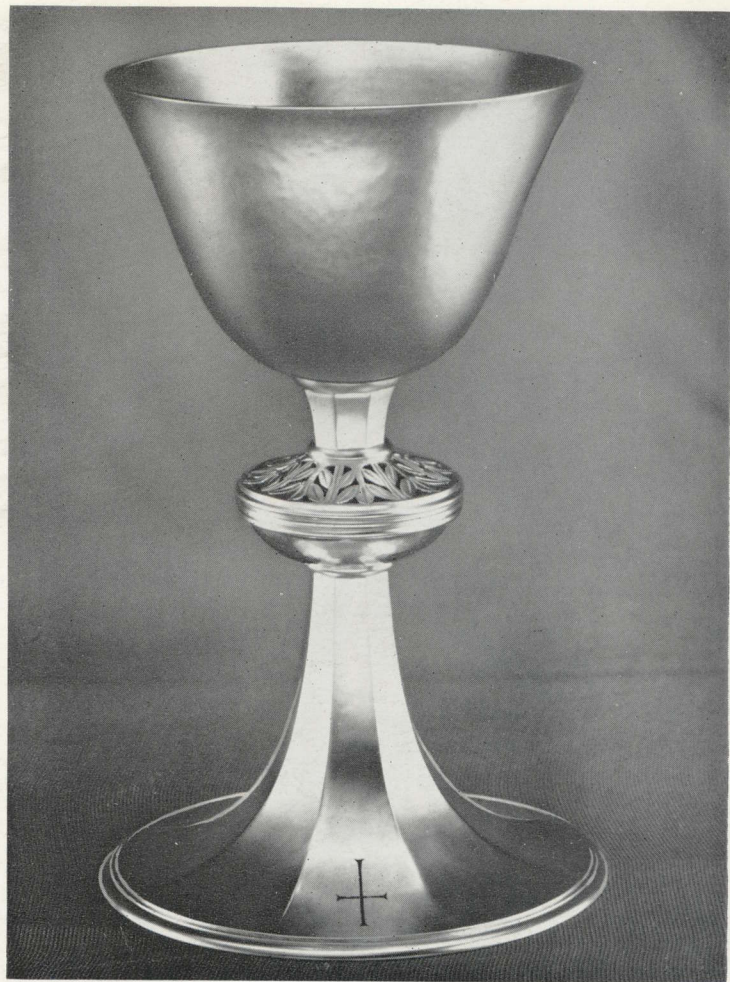
Hand-
Wrought
Chalices
and
Ciboria

Faithcraft

CHURCH ARTISTS AND FURNISHERS

7 TUFTON STREET, WESTMINSTER, LONDON S.W.1

AND AT: THE ABBEY MILL, ST. ALBANS, HERTS





All the chalices, ciboria, pyxes and other vessels shown in this leaflet are entirely hand-wrought by skilled English Craftsmen, working in the traditional way.

Heavy gauge sterling silver is used, so that each vessel not only looks solid and attractive but can be felt at once to contain a good weight of metal.

Front Cover: Chalice No. 1, with pierced and engraved knop.

Opposite: Matching Chalice and Ciborium, "Chelmsford" design.

On right: Chalice No. 6, with repoussé knop.





Each piece is "Hall-marked" that is, tested and stamped at Goldsmiths' Hall in the City of London. This is a guarantee of quality and also dates, in the traditional manner, each vessel so that in due course it will take its place, modestly but certainly, with other fine silverware of the past.

Being entirely hand-wrought, the surface of each vessel shows the attractive hammered finish; and all chalices, ciboria, pyxes and wafer boxes are gilded inside.

On left: Chalice No. 9, with engraved vine-leaf design on stem and base.

On right: Chalice and matching Ciborium, No. 10, with chased decoration.





Chalices are normally supplied with well patens, but if preferred a scale paten with gilded upper surface can be provided, at a slight extra cost.

Sizes of vessels and details of fitted leatherette cases are given in the separate Price List.

On left: Chalice No. 11; Chalice No. 12, with engraved knop.

On right: Chalice No. 2, with Crown of Thorns design on knop.

On back cover: Examples of Wafer Boxes and Pyxes.

These are a selection of designs only; many others in varying styles and prices are available, and special designs will gladly be prepared to your own requirements.



