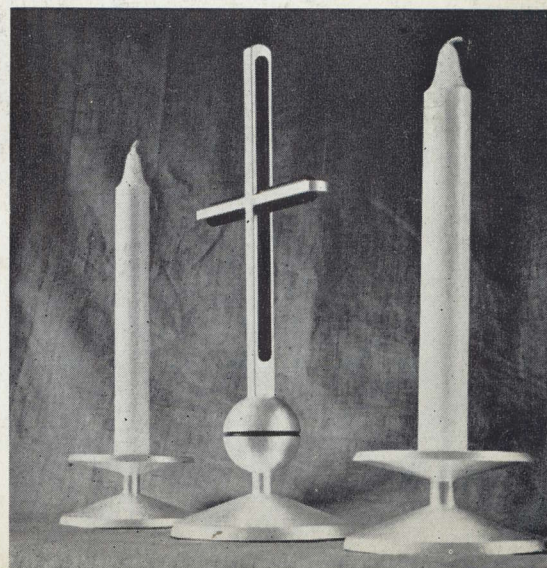




FAITH CRAFT

Church
Artists,
Craftsmen
and
Furnishers

*A simple Altar Set in gilded wood
with some colour*



*Chasuble from the High Mass set in gold and
scarlet made for the Eucharistic Congress 1958*

THE FAITH CRAFT-WORKS LTD.

7 TUFTON STREET • WESTMINSTER • LONDON S.W.1
ABBEY 4927

Low Mass Set in the full Liturgical shape. Made in thin supple material, this ample chasuble falls into rich, dignified folds when worn. The set also includes stole, maniple, burse and veil

Dalmatic in the full Liturgical shape

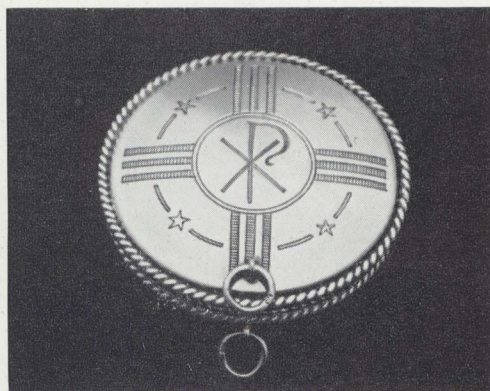


Altar Set in bronze silver-plated





A simple Cope made in coloured damasks or silks. Also available with shaped neck and collegiate (pointed) hood



Pyx in silver, interior gilded. Single and double pyxes, as well as Holy Oil stocks, always available

Chalice, Paten and Ciborium in silver with ivory knobs



Chasuble of "Gothic" shape, made in coloured damask with orphreys of contrasting colour, fully lined. Also available in "Latin" shape, which looks particularly well in the new "Westminster" All-Seasons Tapestry



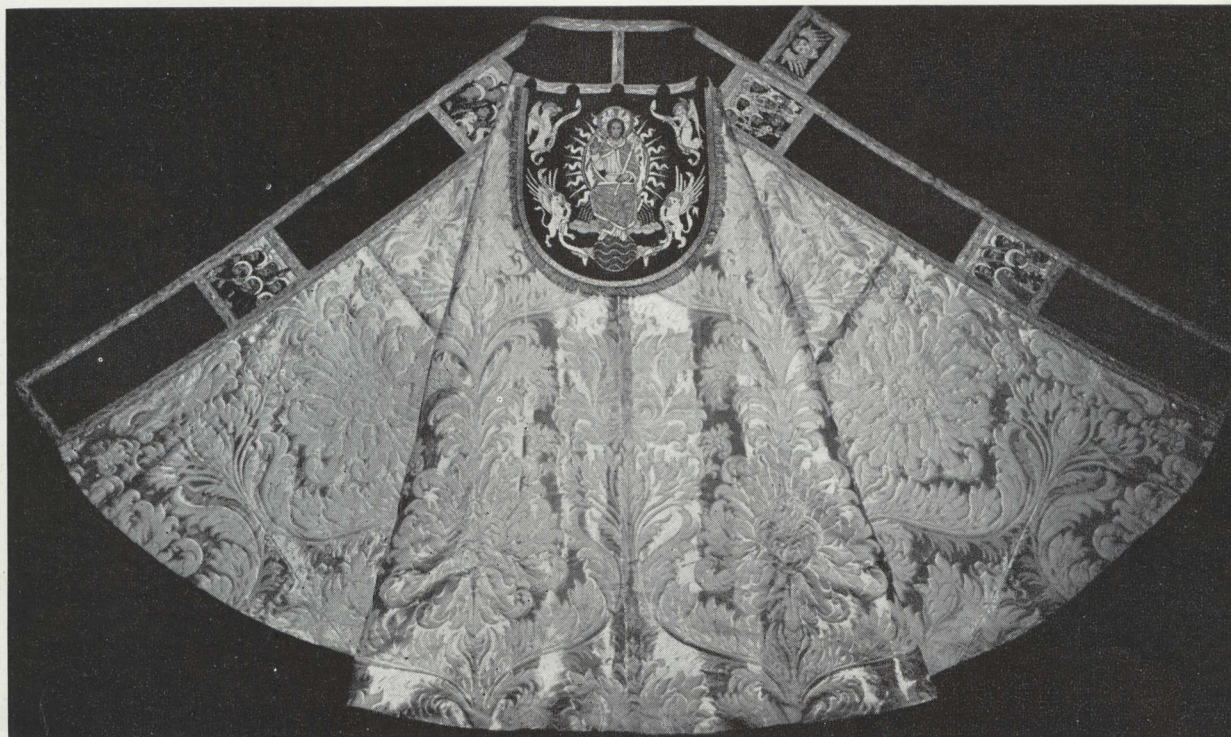


*“St Mary Magdalen” — Stained glass
for St Cuthbert’s, Tsolo, South Africa*

Stoles in damasks and silks, with and without embroidery, are usually in stock, or can be made very quickly to customers’ own choice. Bible and Missal Markers also available

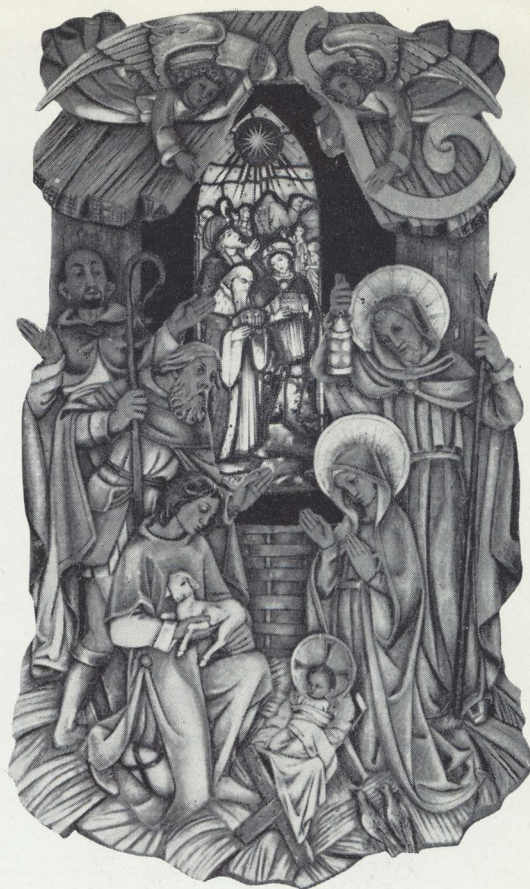


Cope in gold and white “Milanese” with blue hood and orphreys, embroidered with subjects from the Te Deum. Johannesburg Cathedral





Altar set in bronze silver-plated



Above, right: Carved Nativity Group for Children's Corner; in the centre is a window showing the Magi

Below: St Antony's, Nunhead. Wren reredos restored; new woodwork, including altar, panelling, rails, etc., made by Faithcraft





Above: Holy Cross Church Greenford; new woodwork, including Shrine and Rood, as well as stone altar and altar furnishings, made by Faithcraft

Font cover in wood, decorated in colour and gold. Many other designs are available

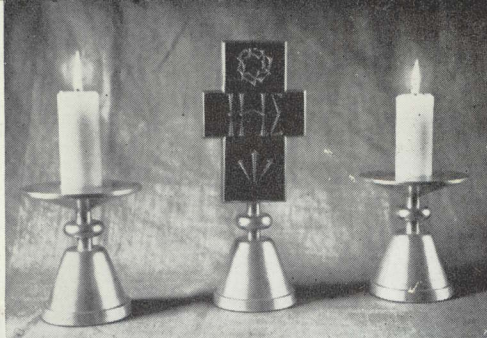


Greenford: hand-carved figure of B. V. M. and Holy Child, delicately coloured with a little gold



St Nicholas; cast in plaster from a woodcarving, 12 in. high, and decorated by hand. Faithcraft make a wide range of figures both small and large. Ask for catalogue



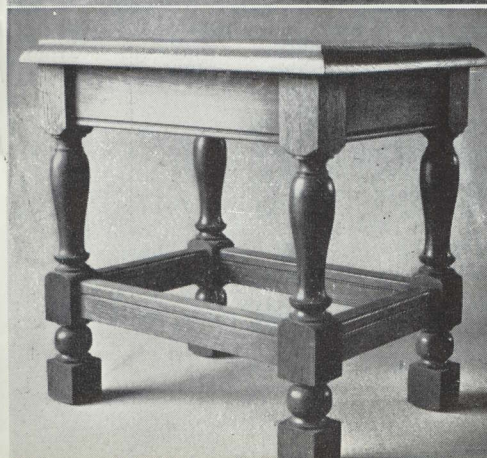
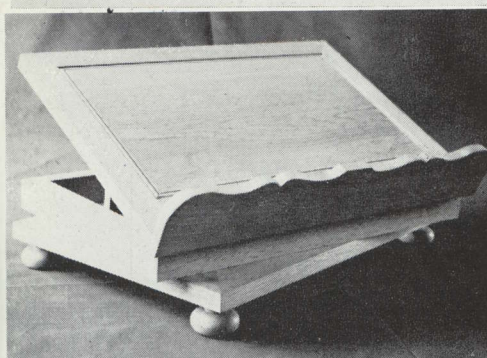


A modern altar set in gilded wood with some colour

Processional Cross in bronze, with enamel plaque

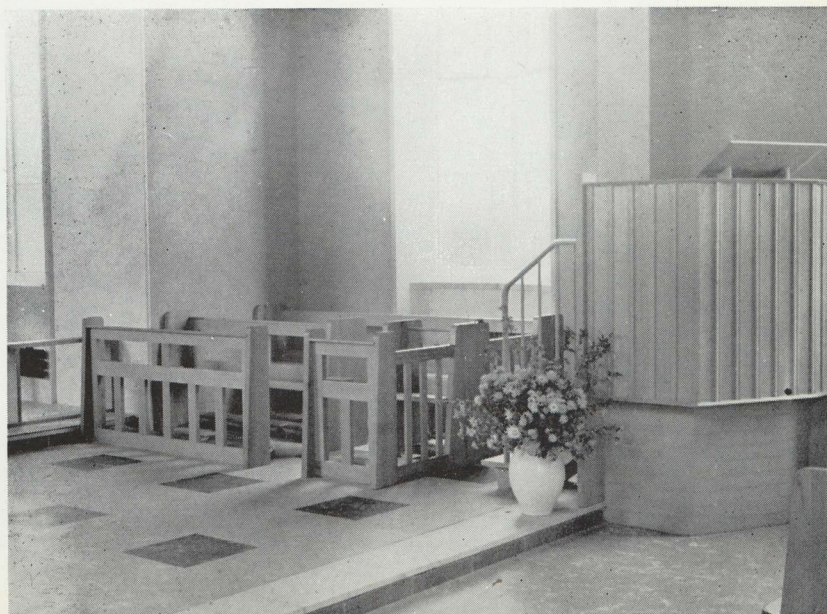
Oak missal desk, adjustable and revolving

Server's stool in oak



St Margaret's Convent, East Grinstead. Figure of the Patron, in wood, lightly coloured with some gilding. The Saint holds a model of the Convent Chapel in her hand. Height: 3 ft. 6 in.

St Alban's, Hemel Hempstead New Town. Choir stalls and pews throughout the church made by Faithcraft; also all the hassocks. We can supply hassocks very quickly; also altar linen, candles and all sanctuary requisites





Above: All Saints', Port-of-Spain, Trinidad. Figure of the Reigning Lord for the east wall, above the high altar. The figure is twice life-size, and richly coloured

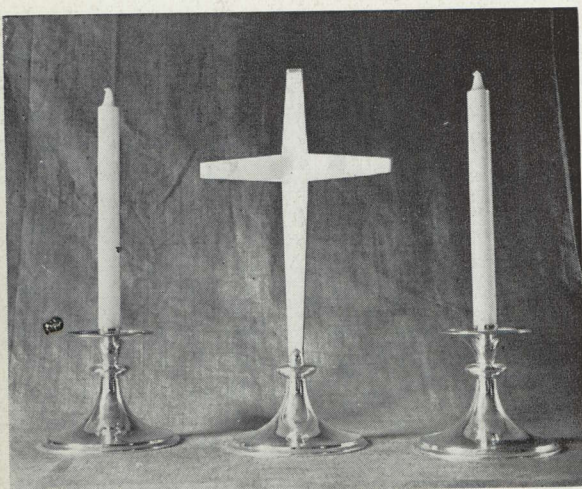
Right: Greycoat School, Westminster. Royal Arms for the Entrance Hall

Below: Altar set in bronze silver-plated—a simple but dignified modern design

FAITHCRAFT

CHURCH ARTISTS, CRAFTSMEN AND FURNISHERS

The knowledge and advice of experienced artists and craftsmen is always available on restorations or re-planning, and on every aspect of church furnishing and arrangement in accordance with the best liturgical principles



THE FAITH CRAFT-WORKS LTD.

7 TUFTON STREET, WESTMINSTER, LONDON, S.W.1

TELEPHONE: ABBEY 4927

WORKSHOPS: THE ABBEY MILL, ST. ALBANS